

*Exclusive to Fews*

# PremiumMax

Size | Strength | Style



Significant weight-loading capabilities with up to 1650kg per arch



**EVENT  
PRODUCTION  
AWARDS 2023**

**WINNER  
SUSTAINABILITY**

# About Fews

Fews are a leading provider of event marquees, temporary buildings, and structures in the UK.

We are unrivalled within our industry when it comes to our flexibility, quality and service. We offer a range of unique products and are always working on innovative solutions to produce efficient yet beautiful structures that will leave lasting impressions.

## Focussing on:

- Sustainability
- Unique, cutting edge structures
- Health and safety
- Fast Installation
- Impeccable service

**“We focus on quality and aim to be the very best”**



**Ian Few**  
Managing Director



# An unrivalled level of service

## Expert advice

Our service starts the moment the conversation with you starts.

We listen carefully to your requirements and concerns. We can then apply our experience and expertise to offer the right solution from our extensive range of products and accessories.

We provide high quality solutions to the most complex of problems including building in tight spaces, specific insulation needs, ground fixings and access. Site visits are free and without obligation.



**Matt Porter**  
Head of Sales



**Molly Rogers**  
Sales Manager



**Jack Moore**  
Sales Assistant

**Fews offer a methodical and comprehensive approach to the service we offer our clients.**

## Turnkey solutions

We are experts in the temporary structures industry, and we can offer full turnkey solutions for a variety of applications.

### Beyond the structure, we can include:

- Lighting, heating, air conditioning
- Power distribution
- Professional end-to-end management

Just pick up the key. That's it!

## Health & safety

Our teams work to provide a seamless and safe working environment for everyone.

- We deliver using our own fleet of vehicles
- Well-trained rigging crews
- Extensive accreditations
- Commitment to staff, client and public welfare
- Method statements for different structure types
- Risk assessments for hazardous activities
- Documented inspection of our equipment

You can be sure that our tried and tested systems can be relied upon.



**Nick Gray**  
Health & Safety Officer

## Project management

Fews have a team of project managers ready to take you through every stage of the process. From the initial enquiry to handover, a single point of contact will ensure that every detail is given the attention it deserves.

- Experienced experts in the field
- Dedicated to each project
- Detailed management
- Professional and prompt handover



**Barney Jones**  
Senior Project Manager



**Sam Felts**  
Project Manager



**Harry Saunders**  
Project Manager



**Brad Edwards**  
Project Manager



**Matt Gee**  
Operations Manager



# Introducing the **PremiumMax** structure.

## What sets it apart?

### Size

With a 30m or 25m span and 3m or 4m eave height, it stands out against the rest, impressively tall and spaciouly wide.

### Strength

Larger profile with 310mm x 122mm durable 6082 T6 Aluminium.

Significant weight-loading capabilities with up to 1650kg per arch.

Structural strength and stability, PremiumMax has it.

### Style

A curved structure with impressively large size and strength capabilities, position the PremiumMax as a versatile structure, whatever the event.

The PremiumMax combines functionality with aesthetics so that it works for you, whatever your style.



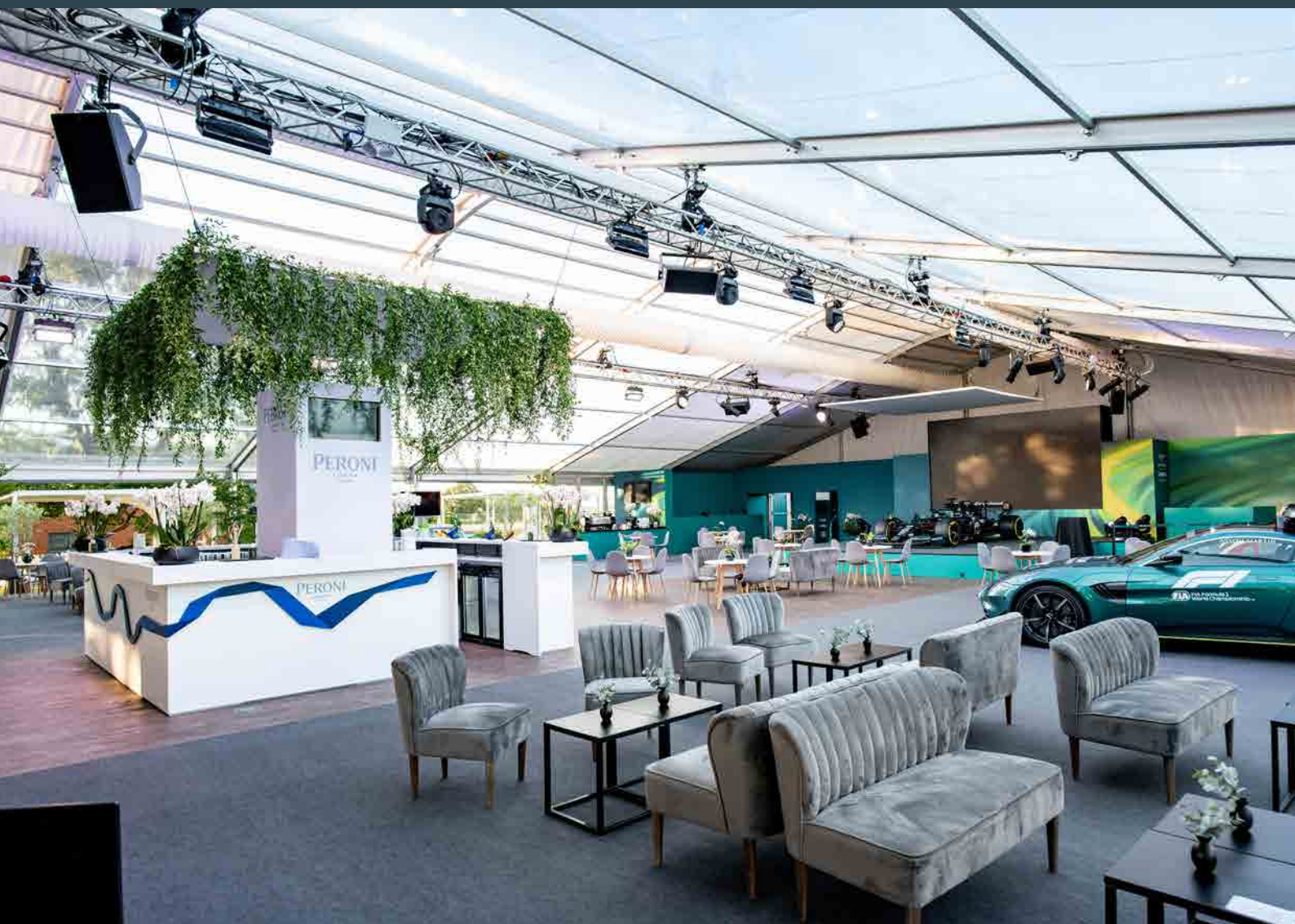
# Imagine the perfect event structure. We've made it.

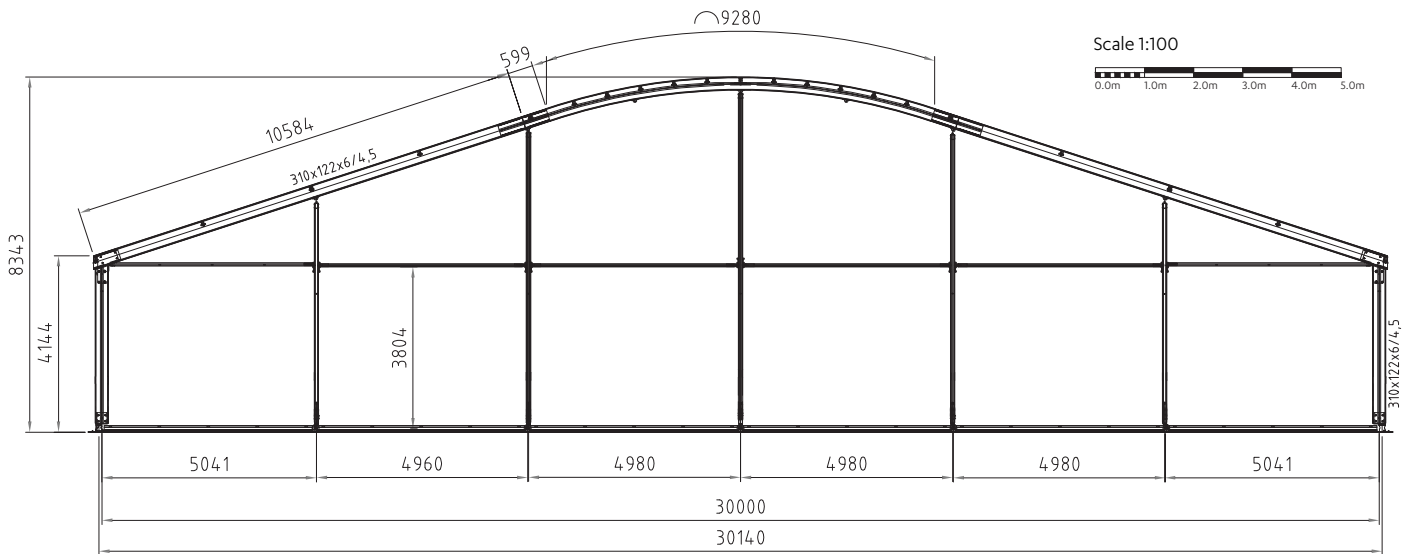
## Designed for:

- High production value events where suspended loads are crucial
- Covering large areas in one span
- Complex sites with varying ground levels
- Split height floors/eaves
- Large capacity events
- Visually stunning appearance (rather than an A frame and many years of use)
- Easy integration with our other structures

## Efficient & capable:

- Nationwide coverage (plus Europe)
- Dedicated Project Manager for all pre-planning and on-site work
- In house H&S advisor and CAD designers
- Fully accredited build crews
- Owned transport fleet
- **Commitment to sustainable delivery: 'Sustainability Award' 2023 at the Event Production Awards**





## Configuration

Width Span

30m or 25m

Eave Height

4m or 3m

Length

Unlimited in 5m bays

Profile

310mm x 122mm

Material

6082-T6 Aluminium

Wind loading

102kmph 28 m/s  
according to BS EN 13782

UK designed. German engineered and  
manufactured by the World's leading fabricator.

## Size

## Type

30m span on 3m eaves

## Loading Capacity

- 50 kg per linear metre  
across each frame  
(total 1500 kg)

**Or**

- 400kg from 3 equal  
points across each frame  
(total 1200kg)

30m span on 4m eaves

- 60 kg per linear metre  
across each frame  
(total 1800 kg)

**Or**

- 550kg from 3 equal  
points across each frame  
(total 1650kg)



**EVENT  
PRODUCTION  
AWARDS 2023**

**WINNER  
SUSTAINABILITY**

# 6 points of sustainability

**Few are committed to environmental sustainability, and it forms part of our long-term planning.**

Wherever possible we look for ways to adopt sustainable working practices. We generate our own power through Biomass and Solar, invest in the latest efficient vehicles and machinery, and recycle carpets and other goods consumed in the process of running the business.

We divide our approach into six key areas and ensure that each is maintained and reviewed.

- Biomass Heat Generation
- Solar Powered Energy Generation
- Energy Efficient Structures
- Sustainable Processes
- Vehicle Fleet
- Recycling



SCAN ME





**Fews**

Chessgrove Park  
Ditchford Bank Road  
Hanbury, Bromsgrove  
Worcestershire B60 4HS

01527 821789

[info@fews.co.uk](mailto:info@fews.co.uk) [fews.co.uk](http://fews.co.uk)